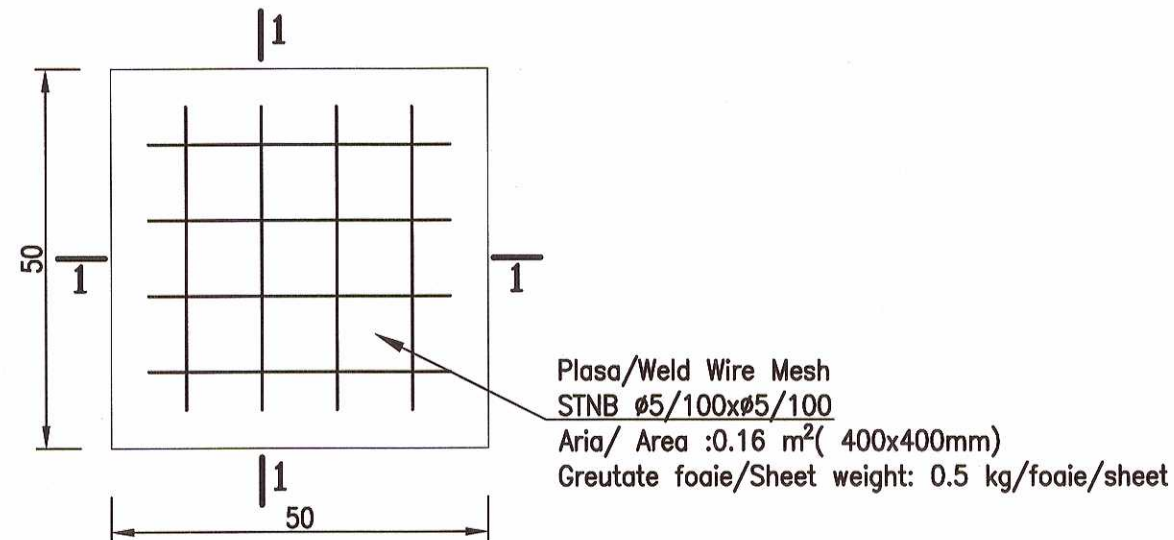


Dala pietonala 50x50x8

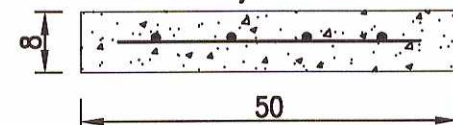
- 39 buc

Scara/Scale 1:10



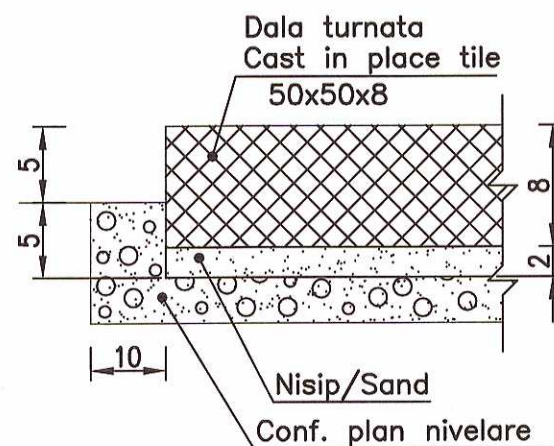
Sectiunea/Section 1-1

Scara/Scale 1:10



Detaliu montaj dala pentru alei pietonale/
Tile assembly detail for concrete paved areas

Scara/Scale 1:5



CARACTERISTICI FUNCTIONALE

CATEGORIA DE IMPORTANTA: D, CONFORM H.G. 766-97
CLASA DE IMPORTANTA: III, CONFORM P100-1/2013

FUNCTIONAL CHARACTERISTICS

IMPORTANCE CATEGORY: D ACCORDING TO H.G. 766-97
IMPORTANCE CLASS: III ACCORDING TO P100-1/2013

SITE CHARACTERISTICS

SEISMIC DESIGN AREA WITH: $a_g=0.35g$ and $T_c=0.7s$ ACC. TO P100-1/2013
CHARACTERISTIC LOAD AREA WITH SNOW ON GROUND 2.00 KN/mp CONF. CODE CR1-1-3-2012
REFERENCE PRESSURE AREA OF 0.4 KPa ACC. TO CODE CR1-1-4-2012

CARACTERISTICI AMPLASAMENT

ZONA CALCUL SEISMIC CU: $a_g=0.35g$ si $T_c=0.7s$ CONF. P100-1/2013
ZONA INCARCARE CARACTERISTICA CU ZAPADA PE SOL 2.00 KN/mp CONF COD CR1-1-3-2012
ZONA PRESIUNE DE REFERINTA VANT 0.4 KPa CONF. COD CR1-1-4-2012

NOTA

- Pozitionarea conform PR1193-CS01-01 plan amplasare lucrari civile.
La executie se vor respecta prescriptiile tehnice din urmatoarele acte normative:
- NE 012/1-2007 Normativ pentru producerea betonului si executarea lucrarilor din beton, beton armat si beton precomprimat - Partea 1: Producerea betonului, publicat prin Ordinul nr. 577/2008 .
 - NE 012/2-2010 Normativ pentru producerea si executarea lucrarilor din beton, beton armat si beton precomprimat - Partea 2: Executarea lucrarilor din beton: publicat prin Ordinul nr. 2514/2010.
 - ST 009-2011 Specificatie tehnica privind produse din otel utilizate ca armaturi: cerinte si criterii de performanta, publicat prin Ordin 683/2012

NOTE

Lay-out according to PR1193-CS01-01 civil work arrangement.
At the execution one will respect the technical regulations from:

- NE 012/1-2007 Normative for concrete production and execution of concrete, reinforced concrete and prestressed concrete works - Part 1: Concrete production, published by Order no. 577/2008;
- NE 012/2-2010 Normative for concrete production and execution of concrete, reinforced concrete and prestressed concrete works - Part 2: Execution of concrete works, published by Order no. 2514/2010;
- ST 009-2011 Technical specification on steel products used as reinforcement: requirements and performance criteria published by Order 683/2012.

BETON ARMAT/ REINFORCED CONCRETE
C25/30; S3; XC4+XF3[RO]; CI 0,2; Dmax 16
PLASA SUDATA/ WELD WIRE MESH STNB
Ø5/100 x Ø5/100

CANTITATI ELEMENT PREFABRICAT/ PREFABRICATED ELEMENT QUANTITIES

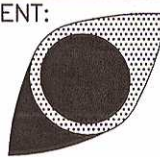

BETON ARMAT/ REINFORCED CONCRETE
0.02 m³/buc(pcs)=50 kg/buc(pcs)
PLASA SUDATA/ WELD WIRE MESH STNB
1 foaie/sheet (0.4x0.4m) 0.16 m²=0.5 kg/foaie (sheet)

FIELD OF EXIGENCY/DOMENIUL DE VERIFICARE - A1
ACCORDING TO/CONFORM H.G.R. 925/95 AND/SI 742/2018

(cote in/dimensions in cm (ex: 30))

1	05.2022	EMIS PENTRU CONSTRUIRE	BADEA S.	SOARE L.	STAN C.	NAN J. C.
0	11.2019	EMIS PENTRU APROBARE	BADEA S.	SOARE L.	STAN C.	NAN J. C.
REV. Nr.	DATA	DESCRIERE	PROIECTAT	VERIFICAT	SEF PROIECT	APROBAT

SCARA: 1:10 DATA PRIMEI EDITII: PROIECTANT

CLIENT:	PROIECTANT:
 S.C. CONPET S.A. STR. 1848, NR. 1 - 3 PLOIESTI, ROMANIA	 S.C. TEAM OIL S.R.L. STR. TRAIAN NR. 42 PLOIESTI, ROMANIA J29/695 din 22.08.2000

DENUMIRE PROIECT:	MODERNIZAREA STATIEI DE POMPARE A TITEIULUI SLOBOZIA JUD. PRAHOVA				
DENUMIRE PLAN:	DALE PREFABRICATE 3x1x0.18 SI PIETONALE				
PROIECT NR.	FAZA	FORMAT	DESEN NR.	PAGINA. NR.	REV. NR.
1193/2019	PT+DE	A3	Pr1193-CS11	2/2	1